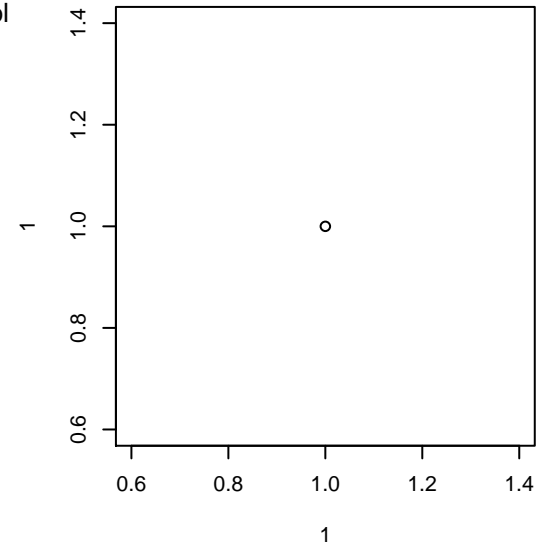


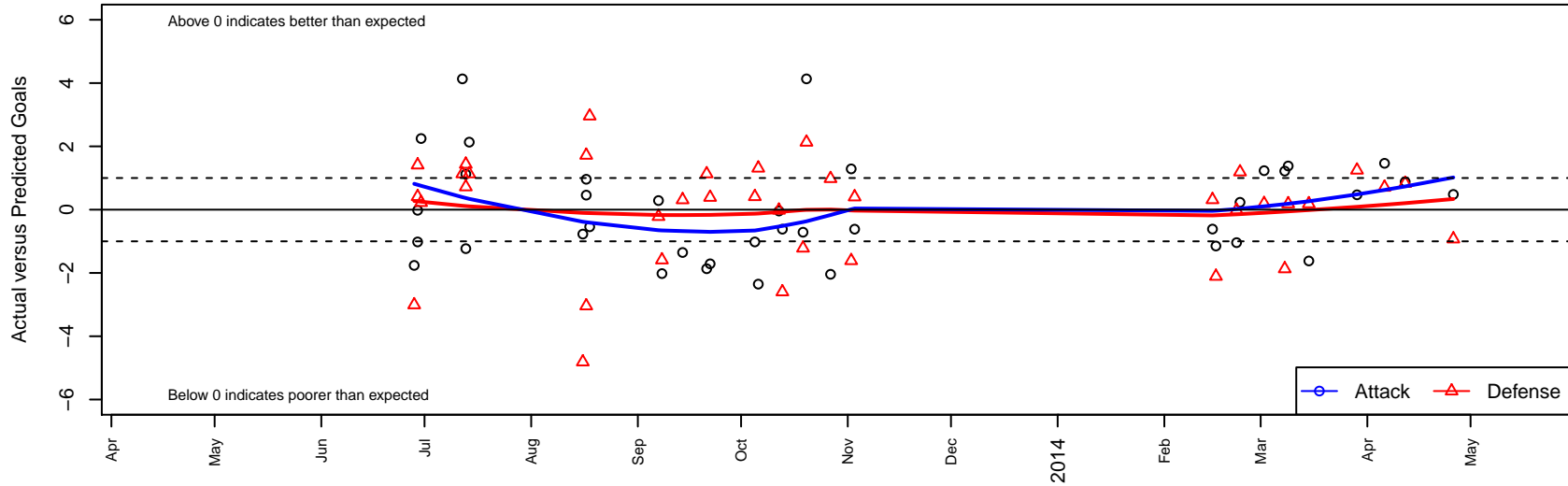
Washington Timbers Green B01

Washington Timbers
 Vancouver, WA
 B01 total strength=789
 attack=1.38 defense=0.67
 fall league = OPL Premier Division U12, Spr O
 alt names used:
 Washington Timbers FC B01 Green
 WaT Green [B01]
 WTFC Green B01
 Washington Timbers B01 Green
 WA Timbers B01 Green

Venues played:
 Clash At the Border Silver/Bronze/Copper Pool
 Clash At the Border Bronze U12
 PCU Summer Classic BU12 Gold
 Mt Hood Challenge BU12 Premier
 OPL Premier Division U12
 Spr OYS PTT B01 Timbers Division 1
 Challenge Cup B01 Division 2 – Challenge 2



Washington Timbers Green B01
 Dots are actual minus expected GF (blue circles) and GA (red triangles).
 Blue line is smoothed change in attack strength. Red is smoothed change in defense strength.



date	home		away		venue	pred.home	pred.
2014-04-26	Washington Timbers Green B01	2	Seattle United S Black B01	4	Challenge Cup B01 Division 2 – Challenge 2	1.52	3.
2014-04-12	Crossfire Premier D B01	0	Washington Timbers Green B01	8	Challenge Cup B01 Division 2 – Challenge 2	0.83	7.
2014-04-06	Washington Timbers Green B01	6	FC Alliance B B01	0	Challenge Cup B01 Division 2 – Challenge 2	4.53	0.
2014-03-29	SSC Shadow B B01	0	Washington Timbers Green B01	2	Challenge Cup B01 Division 2 – Challenge 2	1.25	1.
2014-03-15	Eastside Timbers White B01	1	Washington Timbers Green B01	1	Spr OYS PTT B01 Timbers Division 1	1.18	2.
2014-03-09	Washington Timbers Green B01	4	Eastside Timbers White B01	1	Spr OYS PTT B01 Timbers Division 1	2.62	1.
2014-03-08	Washington Timbers Green B01	3	Washington Timbers Forrest B01	4	Spr OYS PTT B01 Timbers Division 1	1.78	2.
2014-03-02	Academia Leon B01	2	Washington Timbers Green B01	3	Spr OYS PTT B01 Timbers Division 1	2.19	1.
2014-02-23	Washington Timbers Green B01	2	Academia Leon B01	1	Spr OYS PTT B01 Timbers Division 1	1.77	2.
2014-02-22	Washington Timbers Green B01	1	BSC Portland Black B01	1	Spr OYS PTT B01 Timbers Division 1	2.04	0.
2014-02-16	RVSC Timbers Red B01	3	Washington Timbers Green B01	3	Spr OYS PTT B01 Timbers Division 1	0.89	4.
2014-02-15	ETFC Valencia Black –was Blue B01	1	Washington Timbers Green B01	3	Spr OYS PTT B01 Timbers Division 1	1.31	3.
2013-11-03	NEU Lazio White B01	2	Washington Timbers Green B01	2	OPL Premier Division U12	2.40	2.
2013-11-02	Washington Timbers Green B01	3	OSA Cosmos B01	4	OPL Premier Division U12	1.71	2.
2013-10-27	BSC Portland Black B01	0	Washington Timbers Green B01	0	OPL Premier Division U12	0.98	2.
2013-10-20	Westside Timbers Samba B01	0	Washington Timbers Green B01	6	OPL Premier Division U12	2.13	1.
2013-10-19	Washington Timbers Green B01	2	Capital FC Timbers Red –was Black B01	3	OPL Premier Division U12	2.71	1.
2013-10-13	Washington Timbers Green B01	2	NEU Lazio White B01	5	OPL Premier Division U12	2.62	2.
2013-10-12	Washington Timbers Green B01	2	BSC Portland Black B01	1	OPL Premier Division U12	2.04	0.
2013-10-06	BSC HR Adrenaline B01	0	Washington Timbers Green B01	0	OPL Premier Division U12	1.31	2.
2013-10-05	Washington Timbers Green B01	1	Lake Oswego SC Flamengo B01	2	OPL Premier Division U12	2.02	2.
2013-09-22	OSA Cosmos B01	2	Washington Timbers Green B01	0	OPL Premier Division U12	2.39	1.
2013-09-21	Washington Timbers Green B01	0	Westside Timbers Samba B01	1	OPL Premier Division U12	1.87	2.
2013-09-14	Washington Timbers Green B01	1	BSC HR Adrenaline B01	1	OPL Premier Division U12	2.35	1.
2013-09-08	Lake Oswego SC Flamengo B01	4	Washington Timbers Green B01	0	OPL Premier Division U12	2.41	2.
2013-09-07	Capital FC Timbers Red –was Black B01	2	Washington Timbers Green B01	3	OPL Premier Division U12	1.78	2.
2013-08-18	Washington Timbers Green B01	1	Bend FC Timbers Red B01	0	Mt Hood Challenge BU12 Premier	1.54	2.
2013-08-17	Washington Timbers Green B01	2	Bend FC Timbers Red B01	6	Mt Hood Challenge BU12 Premier	1.54	2.

	date	home		away		venue	pred.home	pred.away
059	2013-08-17	Eastside Timbers Black B01	1	Washington Timbers Green B01	2	Mt Hood Challenge BU12 Premier	2.72	1.04
779	2013-08-16	Washington Timbers Green B01	0	Salem Chelsea B01	9	Mt Hood Challenge BU12 Premier	0.77	4.19
180	2013-07-14	Washington Timbers Green B01	4	Westside Timbers Samba B01	1	PCU Summer Classic BU12 Gold	1.87	2.13
932	2013-07-13	PCU Red B01	0	Washington Timbers Green B01	6	PCU Summer Classic BU12 Gold	1.43	4.87
933	2013-07-13	Washington Timbers Green B01	2	NEU Lazio Blue B01	0	PCU Summer Classic BU12 Gold	3.23	0.72
739	2013-07-12	Washington Timbers Green B01	6	Westside Timbers Samba B01	1	PCU Summer Classic BU12 Gold	1.87	2.13
435	2013-06-30	Washington Timbers Green B01	7	RVSC Timbers B01	1	Clash At the Border Bronze U12	4.75	1.22
254	2013-06-29	Washington Timbers Green B01	1	Lake Oswego SC Flamengo B01	2	Clash At the Border Silver/Bronze/Copper Pool U12	2.02	2.41
260	2013-06-29	Lake Oswego SC Flamengo B01	1	Washington Timbers Green B01	2	Clash At the Border Bronze U12	2.41	2.02
118	2013-06-28	LASC Brasil B01	5	Washington Timbers Green B01	2	Clash At the Border Silver/Bronze/Copper Pool U12	1.99	3.76